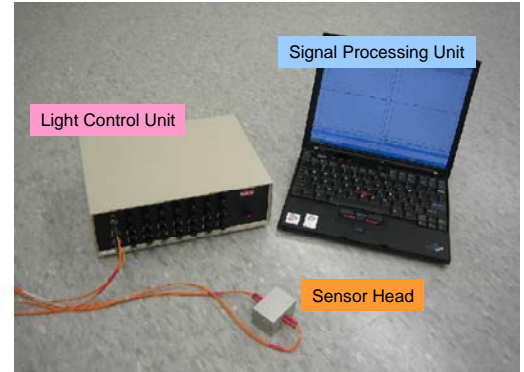


CATFISH-1000

Fiber Optic Accelerometer System

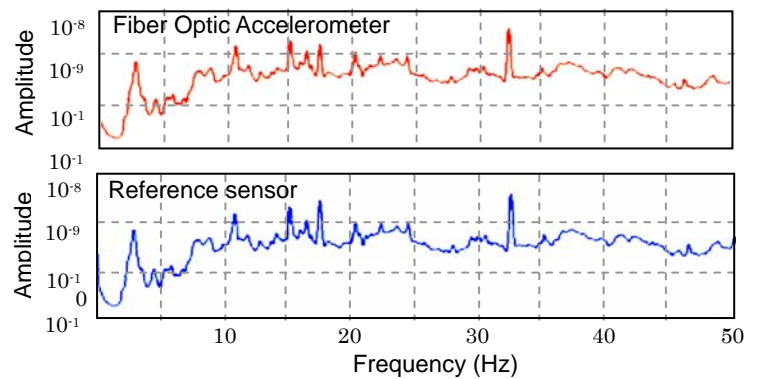
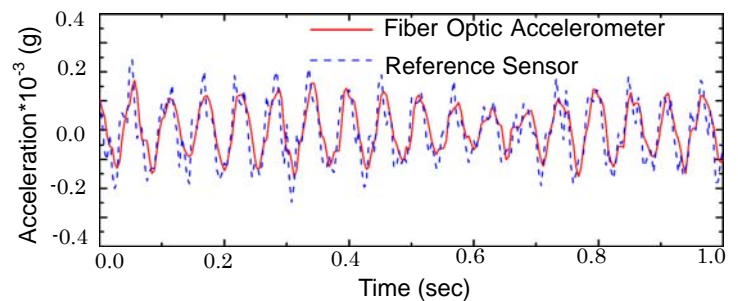


- Immunity to electromagnetic interference and lightning strikes, safe to use in explosion-prone environments
- Lightweight sensor head and cable, easy to install
- High resolution and large measurement range, uniquely suited for accurate measurement of ambient micro-vibration as well as strong motion
- Long-distance signal transmission without attenuation
- Portable system for temporary or permanent monitoring
- Suitable for monitoring ground motion and structural response



Specifications of Accelerometer

Model	CF-1000
Frequency Range	DC ~ 40Hz
Measurement Range	-3g ~ +3g
Resolution	$1 \times 10^{-5} \text{g}$
Cable	Multimode optic fiber cable
Operating Temperature	$-30^{\circ}\text{C} \sim +40^{\circ}\text{C}$
Dimension	34X34X48mm
Weight	0.1kg



Newport Sensors, Inc.

7 Murasaki St., Irvine, CA 92617

Tel: (949) 378-8666, Fax: (949) 856-2082

info@newportsensors.com

www.newportsensors.com

Specifications of Light Control Unit

Model	CUP-1008
Number of Channels	8
Power Supply	12V rechargeable battery AC-DC selectable
Dimension	280X200X90 mm
Weight	2 kg
Operating Temperature	$-30^{\circ}\text{C} \sim +40^{\circ}\text{C}$